



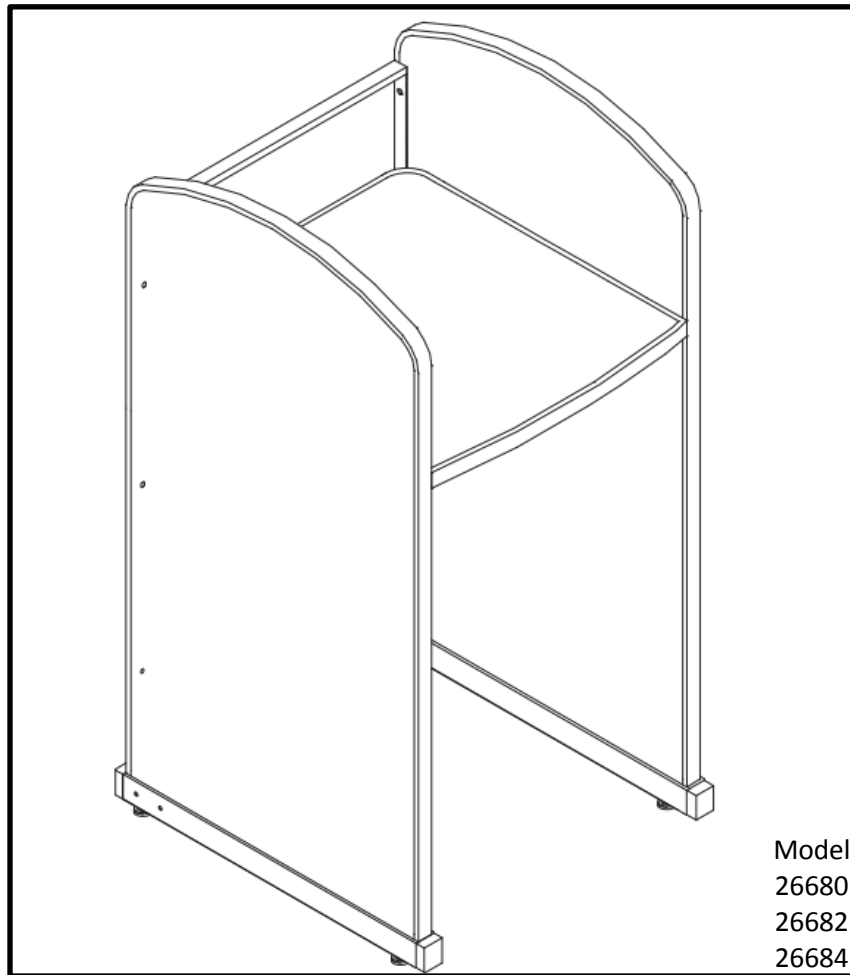
SMITH SYSTEM

Furniture for inspired learning.

Library Carrels

Assembly Instructions

(Starter Unit) See Instruction Sheet 179874 for Adder Unit



Model
26680
26682
26684



SMITH SYSTEM



For assistance in assembling product, or to place
An order please contact customer service at

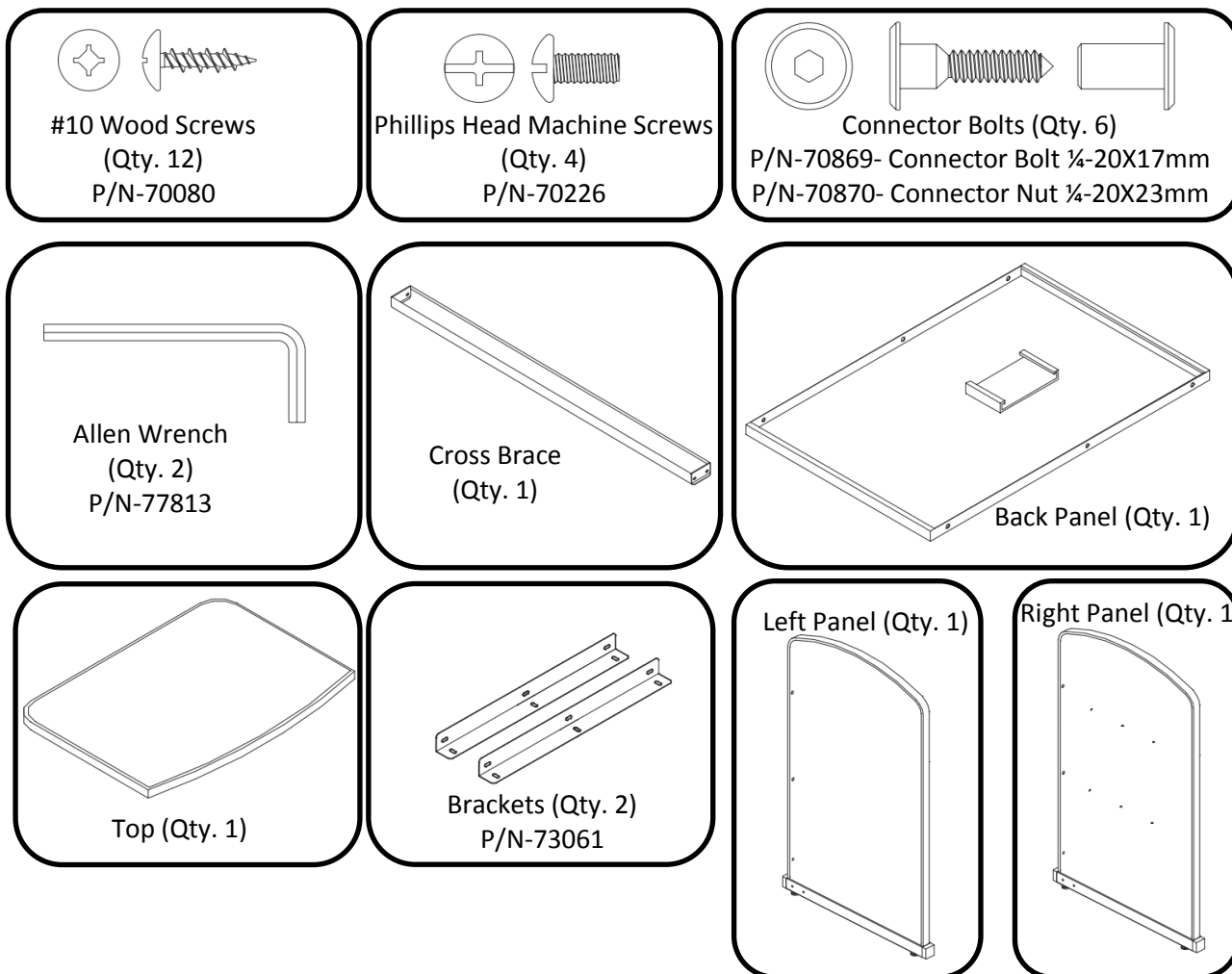
Special Notes

1. Check that all components are accounted for and undamaged before assembling.
2. Assemble product in a clean and dry area.
3. Due to size, we recommend that two people should be involved in assembling product.
4. Clean the product with a mild cleaner and a damp cloth.

Tools

You will need a Phillips head screwdriver.

Hardware and Components



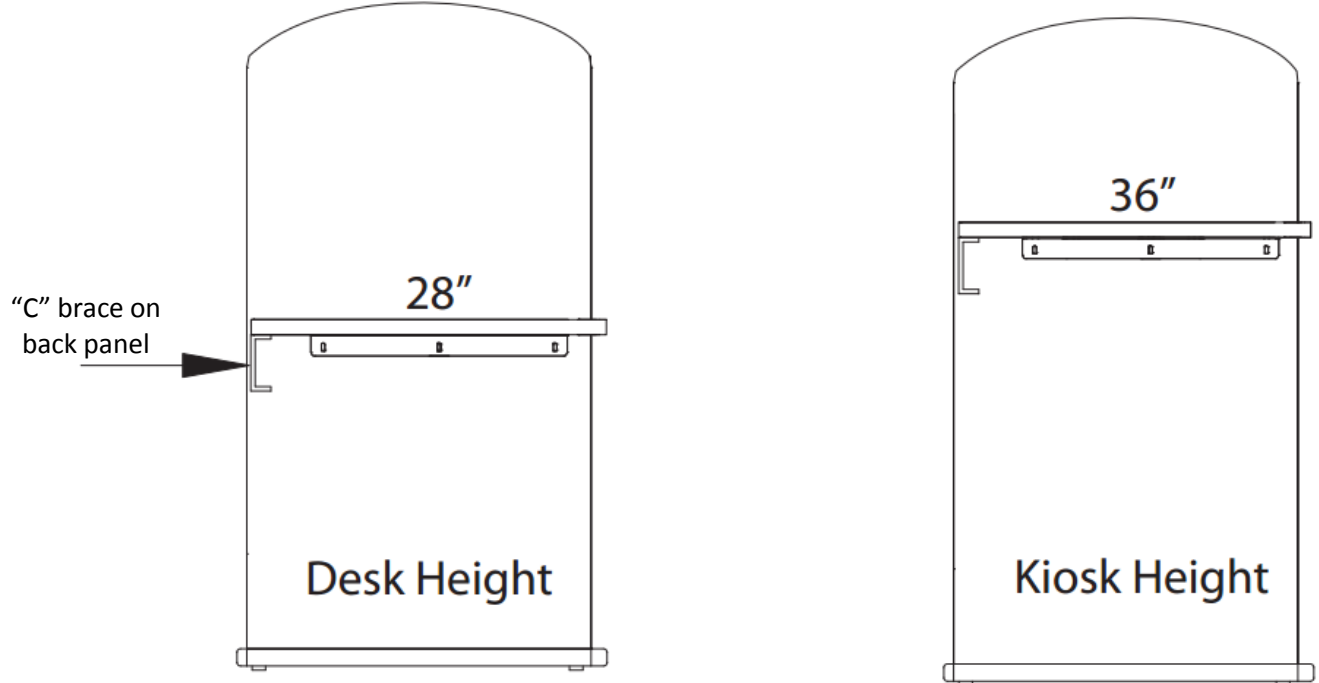
Replacement Pack 74125 Includes:

- (12) 70080- 10x5/8 Truss Head Phillips Head
- (6) 70869- Connector Nut ¼-20X17mm
- (6) 70870- Connector Bolt ¼-20X23mm
- (4) 70226- Machine Screw 10-32X.5
- (2) 77813- Hex Key- 3/16" Short Arm

For assistance in assembling product, or to place
An order please contact customer service at

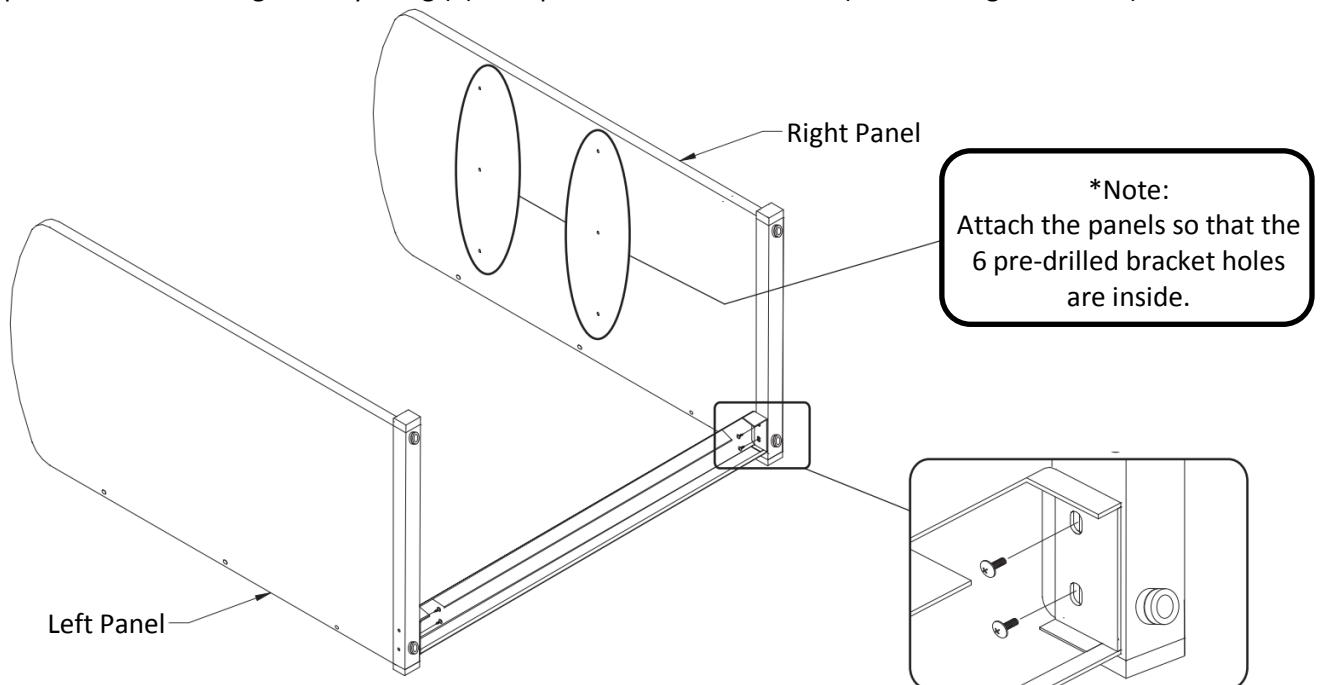
Assembly Instructions Library Carrels (Starter Unit)

URGENT: Back panel orientation determines the top height. By rotating 180 degrees, you can change the carrel to the desk height or the kiosk height.



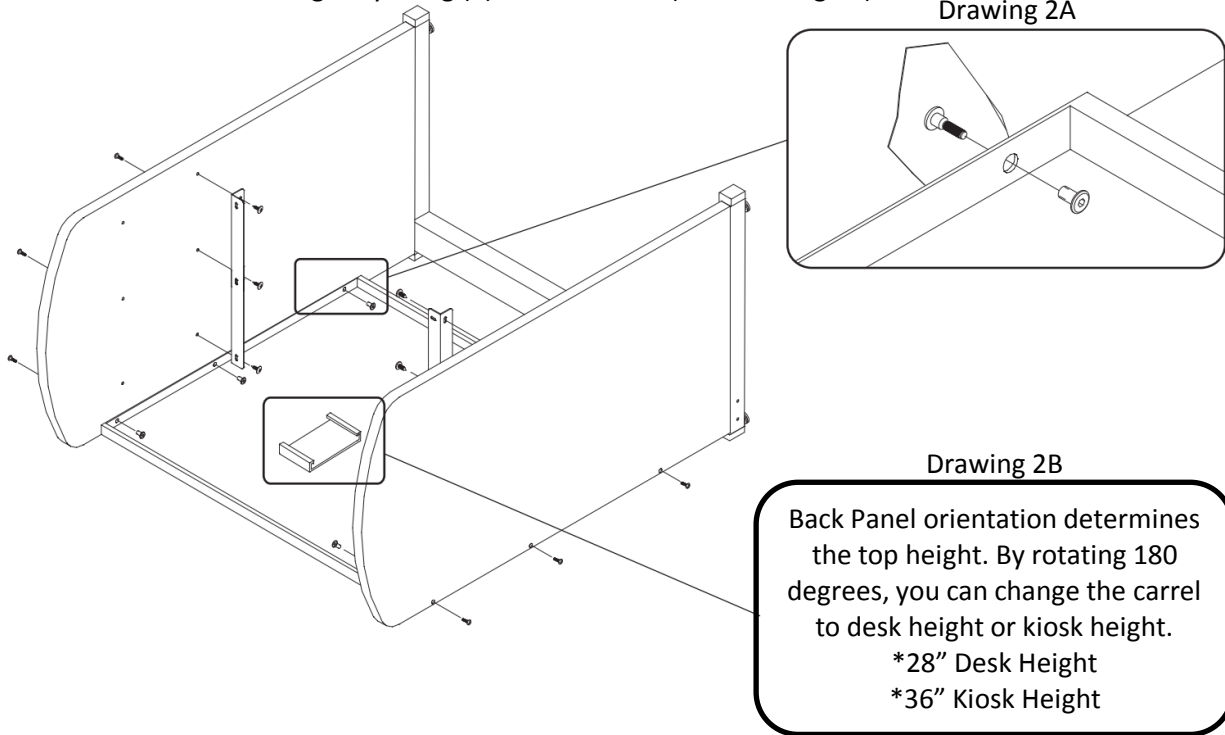
*Due to size, we recommend that two people should be involved in assembling the product

Step 1: With help, lay the right and the left panels on the floor while aligning the cross bar with the pilot holes. Attach together by using (4) Phillips Head Machine Screws (See Drawing 1A & Note).

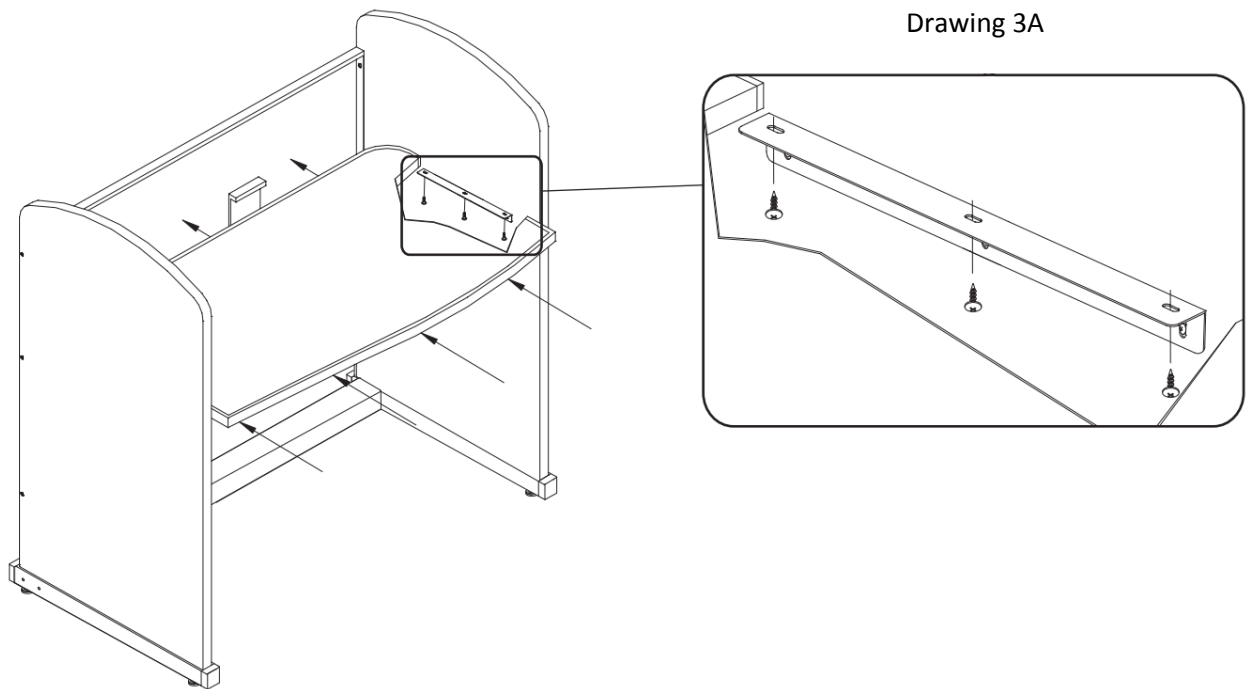


For assistance in assembling product, or to place
An order please contact customer service at

Step 2: Slide the back panel in-between both panels with the bracket facing up. Verify alignment with the pilot holes and attach using (6) Connector Bolts (See Drawing 2A). Next, attach the brackets to either kiosk or desk height by using (6) Wood Screws (See Drawing 2B).



Step 3: Set the unit upright on its feet and slide the work surface above both Brackets until it runs flush against the back panel. Align the predrilled holes underneath the table top with the brackets. Using (6) Wood Screws, attach the top to the brackets (See Drawing 3A).



For assistance in assembling product, or to place
An order please contact customer service at